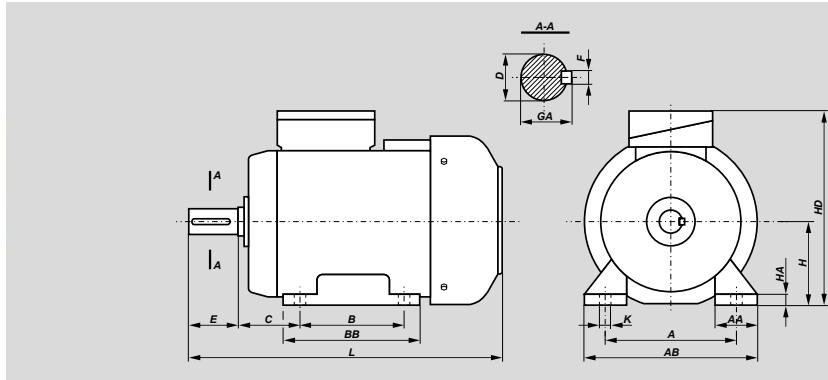
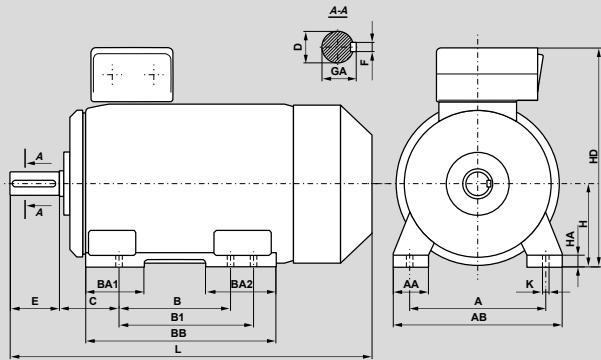


Dimensions of Foot Mounted Motors – IM B3



Motor type	A	B	C	D	E	F	GA	H	K	AA	AB	BB	HA	HD	L
Sh56-.A	90	71	36	9j6	20	3h9	10,2	56	5,8	30	110	92	7	154	183
2SIE56-2B	90	71	36	9j6	20	3h9	10,2	56	5,8	30	110	92	7	154	193
2SIE63-.A	100	80	40	11j6	23	4h9	12,5	63	7	36	124	106	8,5	165	200
2SIE63-2,4B	100	80	40	11j6	23	4h9	12,5	63	7	36	124	106	8,5	165	210
2SIE63-6B	100	80	40	11j6	23	4h9	12,5	63	7	36	124	106	8,5	165	245
2SIE71-2,4A	112	90	45	14j6	30	5h9	16	71	7	45	142	116	8	182	245
2SIE71-2B	112	90	45	14j6	30	5h9	16	71	7	45	142	116	8	182	245
2SIE71-4,6B	112	90	45	14j6	30	5h9	16	71	7	45	142	116	8	182	263
2SIE71-6A	112	90	45	14j6	30	5h9	16	71	7	45	142	116	8	182	223
2SIE71-8B	112	90	45	14j6	30	5h9	16	71	7	45	142	116	8	182	284
2SIE80-4A	125	100	50	19j6	40	6h9	21,5	80	10	55	160	130	9	200	266
2SIE80-6A	125	100	50	19j6	40	6h9	21,5	80	10	55	160	130	9	200	278
2SIE80-6B	125	100	50	19j6	40	6h9	21,5	80	10	55	160	130	9	200	306
2SIE80-8A	125	100	50	19j6	40	6h9	21,5	80	10	55	160	130	9	200	306
2SIE80-8B	125	100	50	19j6	40	6h9	21,5	80	10	55	160	130	9	200	318
3SIE80-.A	125	100	50	19j6	40	6h9	21,5	80	10	55	160	130	9	199	278
3SIE80-.B	125	100	50	19j6	40	6h9	21,5	80	10	55	160	130	9	199	306
2,3SIE90S-2, 4, 6, 8	140	100	56	24j6	50	8h9	27	90	10	47	182	153	10	238	331
2,3SIE90L-2, 8	140	125	56	24j6	50	8h9	27	90	10	47	182	153	10	238	331
3SIE90L-4, 6	140	125	56	24j6	50	8h9	27	90	10	47	182	153	10	238	356
3SIE100L-2, 6, 8A	160	140	63	28j6	60	8h9	31	100	12	52	202	170	12	257	377
3SIE100L-4A, 4B, 8B	160	140	63	28j6	60	8h9	31	100	12	52	202	170	12	257	417
3SIE112M-2, 6, 8	190	140	70	28j6	60	8h9	31	112	12	52	222	170	14	280	398
3SIE112M-4	190	140	70	28j6	60	8h9	31	112	12	52	222	170	14	280	425
3SIE132S	216	140	89	38k6	80	10h9	41	132	12	61	266	220	18	329	512
3SIE132M	216	178	89	38k6	80	10h9	41	132	12	61	266	220	18	329	512
3SIE160M	254	210	108	42k6	110	12h9	45	160	15	81	320	300	25	383	643
3SIE160L	254	254	108	42k6	110	12h9	45	160	15	81	320	300	25	383	643
3SIE180M-2, 4	279	241	121	48k6	110	14h9	51,5	180	15	92	353	320	27	414	723
3SIE180L-4, 6, 8	279	279	121	48k6	110	14h9	51,5	180	15	92	353	320	27	414	723
3SIE200L-8	318	305	133	55m6	110	16h9	59	200	19	90	400	365	35	433	723

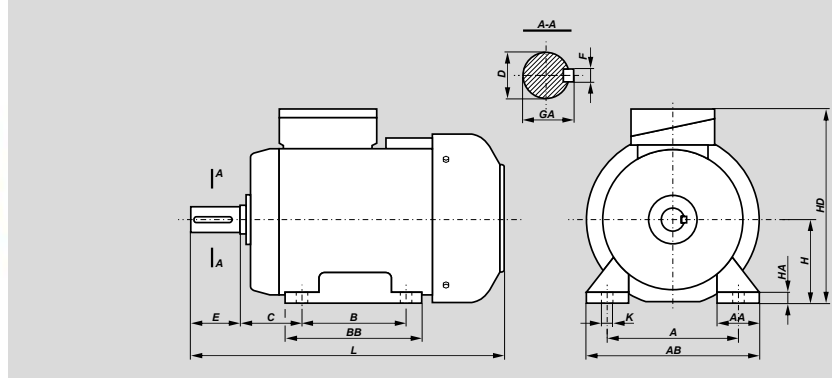
Dimensions of Foot Mounted Motors – IM B3



Motor type	A	B	B1	C	D	E	F	GA	H	HA	K	AA	AB	BA1	BA2	BB	HD	L
3SIE200L2-6	318	305	—	133	55m6	110	16h9	59	200	32	19	80	400	113	113	380	520	850
3SIE225S	356	286	311	149	60m6	140	18h9	64	225	34	19	85	440	115	115	380	570	930
3SIE225M2	356	286	311	149	55m6	110	16h9	59	225	34	19	85	440	115	115	380	570	900
3SIE225M4-8	356	286	311	149	60m6	140	18h9	64	225	34	19	85	440	115	115	380	570	930
3SIE250M2	406	349	—	168	60m6	140	18h9	64	250	37	24	90	480	135	135	445	635	1010
3SIE250M4-8	406	349	—	168	65m6	140	18h9	69	250	37	24	90	480	135	135	445	635	1040
3SIE280S2	457	368	419	190	65m6	140	18h9	69	280	40	24	105	550	130	165	520	720	1135
3SIE280S4-8	457	368	419	190	75m6	140	20h9	79.5	280	40	24	105	550	130	165	520	720	1135
3SIE280M2	457	368	419	190	65m6	140	18h9	69	280	40	24	105	550	130	165	520	720	1135
3SIE280M4-8	457	368	419	190	75m6	140	20h9	79.5	280	40	24	105	550	130	165	520	720	1135
3SIE315S2	508	406	457	216	65m6	140	18h9	69	315	48	28	120	610	160	160	565	805	1235
3SIE315S4-8	508	406	457	216	80m6	170	22h9	85	315	48	28	120	610	160	160	565	805	1265
3SIE315M2A;B	508	406	457	216	65m6	140	18h9	69	315	48	28	120	610	160	160	565	805	1235
3SIE315M4A;B;6A;8A;(B)	508	406	457	216	80m6	170	22h9	85	315	48	28	120	610	160	160	565	805	1265
3SIE315M6B	508	406	457	216	80m6	170	22h9	85	315	48	28	135	610	135	205	600	805	1355
3SIE315M2C	508	406	457	216	70m6	140	20h9	74.5	315	48	28	135	610	135	205	600	805	1290
3SIE315M4C	508	406	457	216	80m6	170	22h9	85	315	48	28	135	610	135	205	600	805	1320
3SIE315M6C	508	406	457	216	80m6	170	22h9	85	315	48	28	135	610	135	205	600	805	1320
3SIE315M6D	508	406	457	216	90m6	170	25h9	95	315	48	28	135	610	135	205	600	805	1320
3SIE315M8C;8D	508	406	457	216	90m6	170	25h9	95	315	48	28	135	610	135	205	600	805	1385
3SIE355ML (2)	610	560	630	254	80m6	170	22h9	85	355	50	28	150	720	250	300	890	935	1580
3SIE355ML (4-8)	610	560	630	254	100m6	210	28h9	106	355	50	28	150	720	250	300	890	935	1620
3SIE355H (2)	610	900	—	200	70m6	140	20h9	74.5	355	45	28	160	730	265	265	1045	995	1800
3SIE355H (4-8)	610	900	—	200	100m6	210	28h9	106	355	45	28	160	730	265	265	1045	995	1870

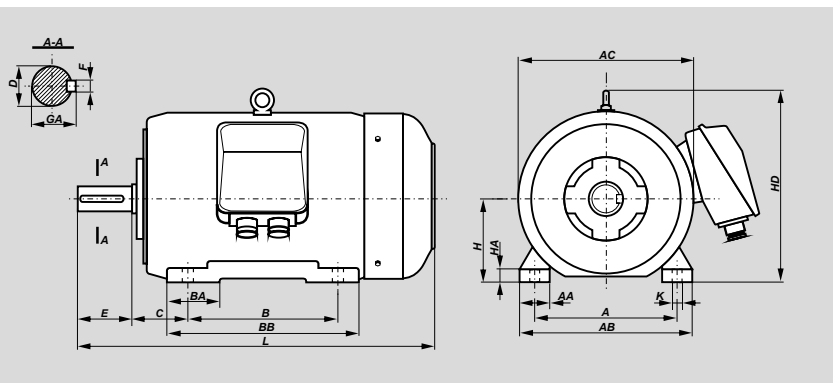
Dimensions of Foot Mounted Motors – IM B3

Motors series Sh and Sg • 2p=10, 12

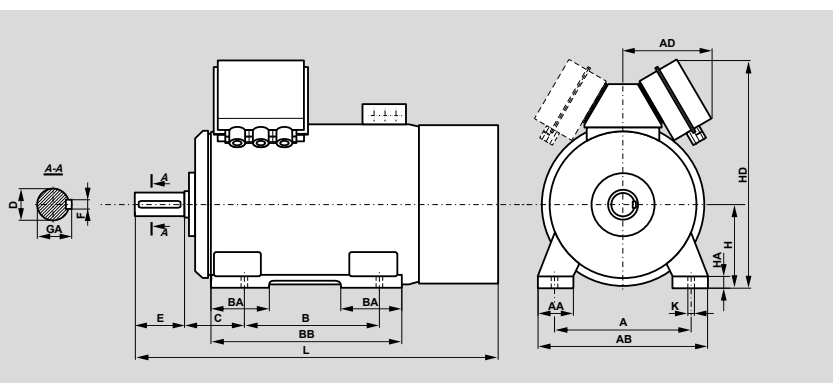


Type of motor	A	B	C	D	E	F	GA	H	HA	K	AA	AB	BB	HD	L
Sh90S-10	140	100	56	24j6	50	8h9	27	90	10	10	50	170	153	220	305
Sh90L-10	140	125	56	24j6	50	8h9	27	90	10	10	50	170	153	220	330
Sg100L-10A	160	140	63	28j6	60	8h9	31	100	14	12	45	200	172	240	376
Sg100L-10B	160	140	63	28j6	60	8h9	31	100	14	12	45	200	172	240	376
Sg112M-10	190	140	70	28j6	60	8h9	31	112	14	12	54	230	174	276	384
Sg112M-10A	190	140	70	28j6	60	8h9	31	112	14	12	54	230	174	276	384
Sg132S-10	216	140	89	38k6	80	10h9	41	132	16	12	56	278	182	310	463
Sg132S-10A	216	140	89	38k6	80	10h9	41	132	16	12	56	278	182	310	463
Sg132S-10B	216	140	89	38k6	80	10h9	41	132	16	12	56	278	182	310	463
Sg160L-10	254	254	108	42k6	110	12h9	45	160	20	15	60	305	300	370	656
Sg180L-10	279	279	121	48k6	110	14h9	51,5	180	26	15	70	350	320	408	705
Sg100L-12	160	140	63	28j6	60	8h9	31	100	14	12	45	200	172	240	376
Sg112M-12	190	140	70	28j6	60	8h9	31	112	14	12	54	230	174	276	384
Sg132S-12	216	140	89	38k6	80	10h9	41	132	16	12	56	278	182	310	463
Sg132M-12	216	178	89	38k6	80	10h9	41	132	16	12	56	278	182	310	501
Sg132M-12B	216	178	89	38k6	80	10h9	41	132	16	12	56	278	220	310	501
Sg160M-12	254	210	108	42k6	110	12h9	45	160	20	15	60	305	256	370	612
Sg160L-12	254	254	108	42k6	110	12h9	45	160	20	15	60	305	300	370	656
Sg180L-12	279	279	121	48k6	110	14h9	51,5	180	26	15	70	350	320	408	705

Dimensions of Foot Mounted Motors – IM B3

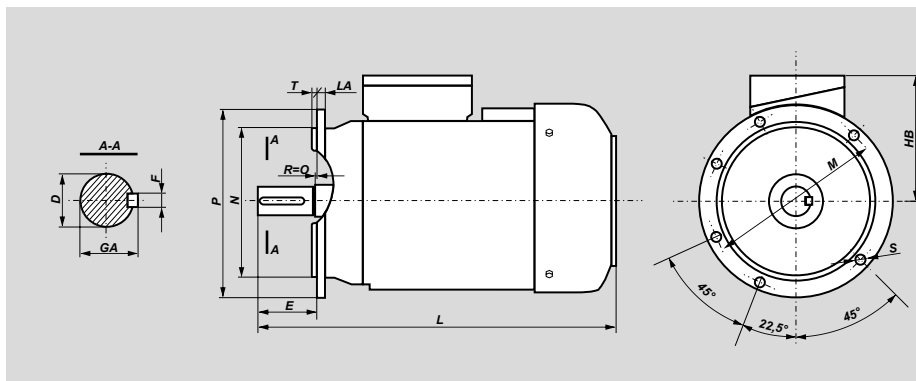


Motor type	A	B	C	D	E	F	GA	H	HA	K	AA	AB	AC	BA	BB	HD	L
2Sg200L10-12	318	305	133	55m6	110	16h9	59	200	32	19	80	400	450	100	380	485	825
2Sg225S10-12	356	286	149	60m6	140	18h9	64	225	34	19	85	445	505	110	355	535	865
2Sg225M10-12	356	311	149	60m6	140	18h9	64	225	34	19	85	445	505	110	380	535	890
2Sg250M10-12	406	349	168	65m6	140	18h9	69	250	36	24	90	495	540	120	420	590	965
2Sg280S10-12	457	368	190	75m6	140	20h9	79,5	280	40	24	100	560	620	165	520	660	1040
2Sg280M10-12	457	419	190	75m6	140	20h9	79,5	280	40	24	100	560	620	165	520	660	1040
2Sg315S10-12	508	406	216	80m6	170	22h9	85	315	46	28	105	610	620	190	560	695	1210
2Sg315M10-12	508	457	216	80m6	170	22h9	85	315	46	28	105	610	620	190	560	695	1210



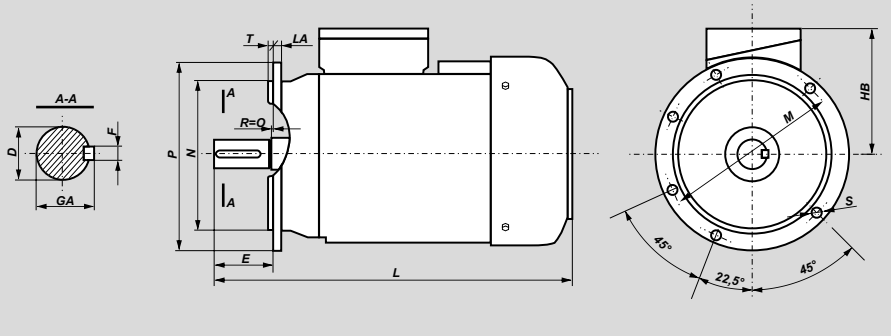
Motor type	Poles	A	B	C	D	E	F	GA	H	HA	K	AA	AB	AD	BA	BB	HD	L
3SIE355...s	2	610	900	200	70m6	140	20h9	74,5	355	45	28	160	730	-	265	1045	995	1800
3SIE355...s	4÷8	610	900	200	100m6	210	28h9	106	355	45	28	160	730	-	265	1045	995	1870
3SIE400...s	2	686	1000	224	80m6	170	22h9	85	400	50	35	175	840	520	265	1160	1255	1980
3SIE/Sh400...s	4÷10	686	1000	224	110m6	210	28h9	116	400	50	35	175	840	520	265	1160	1255	1960
3SIE450...s	2	750	1120	254	80m6	170	22h9	85	450	60	35	205	940	560	340	1320	1356	2155
3SIE/Sh450...s	4÷12	750	1120	254	110m6	210	28h9	116	450	60	35	205	940	560	340	1320	1356	2105
3SIE500...s	2	850	1250	450	90m6	170	25h9	95	500	70	42	223	1050	560	300	1450	1470	2758
3SIE/Sh500...s	4÷12	850	1250	280	120m6	210	32h9	127	500	70	42	223	1050	560	300	1450	1470	2430

Dimensions of Flange Mounted Motors – IM B5, IM V1



Motor type	D	E	F	GA	M	N	P	LA	T	HB	L	S (f)	S (holes)
SKh56-A	9j6	20	3h9	10,2	100	80j6	120	8	3	98	183	7	4
2SIEK56-2B	9j6	20	3h9	10,2	100	80j6	120	8	3	98	193	7	4
2SIEK63-A	11j6	23	4h9	12,5	115	95j6	140	9	3	102	200	10	4
2SIEK63-2, 4B	11j6	23	4h9	12,5	115	95j6	140	9	3	102	210	10	4
2SIEK63-6B	11j6	23	4h9	12,5	115	95j6	140	9	3	102	245	10	4
2SIEK71-2, 4A	14j6	30	5h9	16	130	110j6	160	9	3,5	111	245	10	4
2SIEK71-2B	14j6	30	5h9	16	130	110j6	160	9	3,5	111	245	10	4
2SIEK71-4,6B	14j6	30	5h9	16	130	110j6	160	9	3,5	111	263	10	4
2SIEK71-6A	14j6	30	5h9	16	130	110j6	160	9	3,5	111	223	10	4
2SIEK71-8B	14j6	30	5h9	16	130	110j6	160	9	3,5	111	284	10	4
2SIEK80-4A	19j6	40	6h9	21,5	165	130j6	200	10	3,5	120	266	12	4
2SIEK80-6A	19j6	40	6h9	21,5	165	130j6	200	10	3,5	120	278	12	4
2SIEK80-6B	19j6	40	6h9	21,5	165	130j6	200	10	3,5	120	306	12	4
2SIEK80-8A	19j6	40	6h9	21,5	165	130j6	200	10	3,5	120	306	12	4
2SIEK80-8B	19j6	40	6h9	21,5	165	130j6	200	10	3,5	120	318	12	4
3SIEK80-A	19j6	40	6h9	21,5	165	130j6	200	10	3,5	119	278	12	4
3SIEK80-B	19j6	40	6h9	21,5	165	130j6	200	10	3,5	119	306	12	4
2,3SIEK90S-2, 4, 6, L2, 8	24j6	50	8h9	27	165	130j6	200	8	3,5	148	331	12	4
2,3SIEK90L-4, 6	24j6	50	8h9	27	165	130j6	200	8	3,5	148	356	12	4
3SIEK100L-2, 6, 8A	28j6	60	8h9	31	215	180j6	250	11	4	157	377	15	4
3SIEK100L-4A, 4B, 8B	28j6	60	8h9	31	215	180j6	250	11	4	157	417	15	4
3SIEK112M-2, 6, 8	28j6	60	8h9	31	215	180j6	250	12	4	168	398	15	4
3SIEK112M-4	28j6	60	8h9	31	215	180j6	250	12	4	168	425	15	4
3SIEK132S	38k6	80	10h9	41	265	230j6	300	12	4	197	512	15	4
3SIEK132M	38k6	80	10h9	41	265	230j6	300	12	4	197	512	15	4
3SIEK160M	42k6	110	12h9	45	300	250j6	350	13	5	223	643	19	4
3SIEK160L	42k6	110	12h9	45	300	250j6	350	13	5	223	643	19	4
3SIEK180M-2, 4	48k6	110	14h9	51,5	300	250j6	350	13	5	234	723	19	4
3SIEK180L-4, 6, 8	48k6	110	14h9	51,5	300	250j6	350	13	5	234	723	19	4
3SIEK200L8	55m6	110	16h9	59	350	300j6	400	16,5	5	234	723	19	4

Dimensions of Flange Mounted Motors – IM B5, IM V1

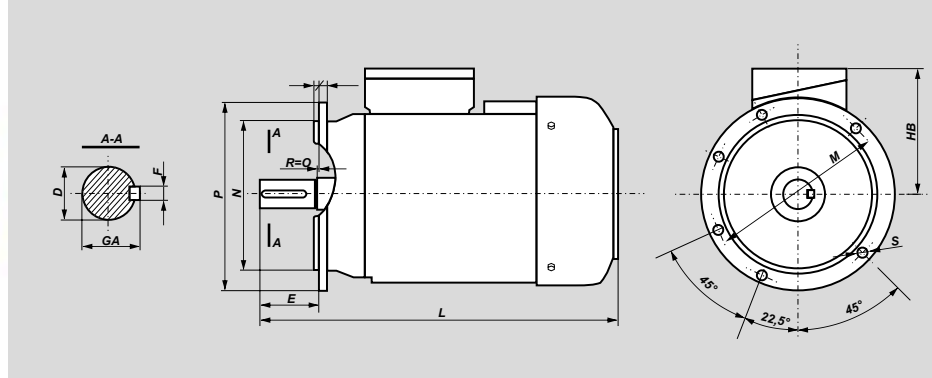


Motor type	D	E	F	GA	M	N	P	LA	T	HB	L	S (f)	S (holes)
3SIEK200L2-6	55m6	110	16h9	59	350	300j6	400	16,5	5	320	850	19	4
3SIEK225S	60m6	140	18h9	64	400	350j6	450	18	5	345	930	19	8
3SIEK225M2	55m6	110	16h9	59	400	350j6	450	18	5	345	900	19	8
3SIEK225M4-8	60m6	140	18h9	64	400	350j6	450	18	5	345	930	19	8
3SIEK250M2	60m6	140	18h9	64	500	450j6	550	23	5	385	1010	19	8
3SIEK250M4-8	65m6	140	18h9	69	500	450j6	550	23	5	385	1040	19	8
3SIEK280S2	65m6	140	18h9	69	500	450j6	550	23	5	440	1135	19	8
3SIEK280S4-8	75m6	140	20h9	79,5	500	450j6	550	23	5	440	1135	19	8
3SIEK280M2	65m6	140	18h9	69	500	450j6	550	23	5	440	1135	19	8
3SIEK280M4-8	75m6	140	20h9	79,5	500	450j6	550	23	5	440	1135	19	8
3SIEK315S2	65m6	140	18h9	69	600	550j6	660	23	6	490	1235	24	8
3SIEK315S4-8	80m6	170	22h9	85	600	550j6	660	23	6	490	1265	24	8
3SIEK315M2A;B	65m6	140	18h9	69	600	550j6	660	23	6	490	1235	24	8
3SIEK315M4A;B;6A ;8A;(B)	80m6	170	22h9	85	600	550j6	660	23	6	490	1265	24	8
3SIEK315M6B	80m6	170	22h9	85	600	550j6	660	23	6	490	1355	24	8
3SIEK315M2C	70m6	140	20h9	74,5	600	550j6	660	23	6	490	1290	24	8
3SIEK315M4C	80m6	170	22h9	85	600	550j6	660	23	6	490	1320	24	8
3SIEK315M6C	80m6	170	22h9	85	600	550j6	660	23	6	490	1320	24	8
3SIEK315M6D	90m6	170	25h9	95	600	550j6	660	23	6	490	1320	24	8
3SIEK315M8C;8D	90m6	170	25h9	95	600	550j6	660	23	6	490	1385	24	8
3SIEK355ML(4-8)*	100m6	210	28h9	106	740	680j6	800	24	6	580	1620	22	8
3SIEK355H(4-8)*	100m6	210	28h9	106	740	680j6	800	24	6	638	1955	22	8

*only in vertical position IM V1

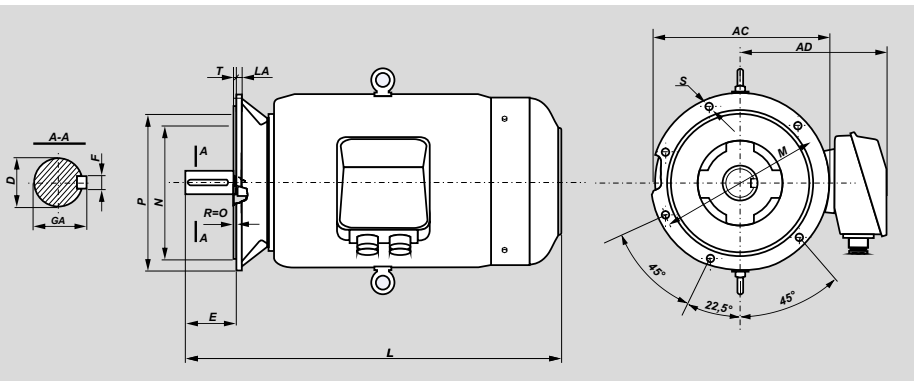
Dimensions of Flange Mounted Motors – IM B5, IM V1

Motors series Sh and Sg • 2p=10, 12

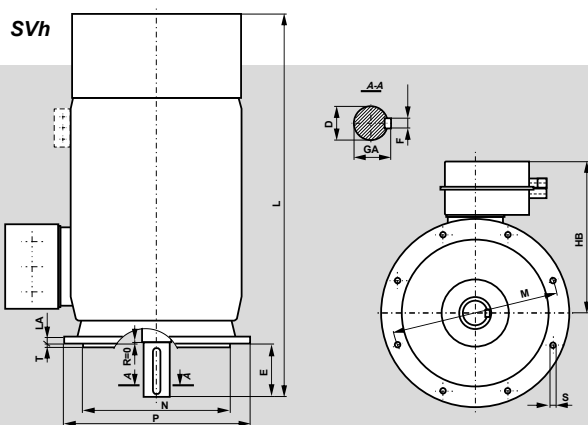


Type of motor	D	E	F	GA	M	N	P	LA	T	S	HB	L
SKh90S-10	24j6	50	8h9	27	165	130j6	200	8	3,5	12	130	305
SKh90L-10	24j6	50	8h9	27	165	130j6	200	8	3,5	12	130	330
SKg100L-10A	28j6	60	8h9	31	215	180j6	250	11	4	15	140	376
SKg100L-10B	28j6	60	8h9	31	215	180j6	250	11	4	15	140	376
SKg112M-10	28j6	60	8h9	31	215	180j6	250	12	4	15	164	384
SKg112M-10A	28j6	60	8h9	31	215	180j6	250	12	4	15	164	384
SKg132S-10	38k6	80	10h9	41	265	230j6	300	12	4	15	178	463
SKg132S-10A	38k6	80	10h9	41	265	230j6	300	12	4	15	178	463
SKg132S-10B	38k6	80	10h9	41	265	230j6	300	12	4	15	178	463
SKg160L-10	42k6	110	12h9	45	300	250j6	350	13	5	19	210	656
SKg180L-10	48k6	110	14h9	51,5	300	250j6	350	13	5	19	228	705
SKg100L-12	28j6	60	8h9	31	215	180j6	250	11	4	15	140	376
SKg112M-12	28j6	60	8h9	31	215	180j6	250	12	4	15	164	384
SKg132S-12	38k6	80	10h9	41	265	230j6	300	12	4	15	178	463
SKg132M-12	38k6	80	10h9	41	265	230j6	300	12	4	15	178	501
SKg132M-12B	38k6	80	10h9	41	265	230j6	300	12	4	15	178	501
SKg160M-12	42k6	110	12h9	45	300	250j6	350	13	5	19	210	612
SKg160L-12	42k6	110	12h9	45	300	250j6	350	13	5	19	210	656
SKg180L-12	48k6	110	14h9	51,5	300	250j6	350	13	5	19	228	705

Dimensions of Flange Mounted Motors – IM B5, IM V1



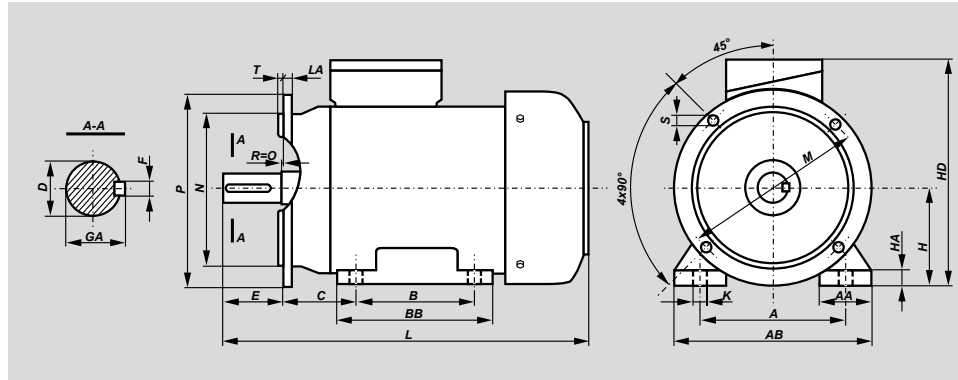
Motor type	D	E	F	GA	AC	AD	L	LA	M	N	P	T	S	
													∅	Holes
2SKg200L10-12	55m6	110	16h9	59	450	340	825	16,5	350	300j6	400	5	18	4
2SKg225S10-12	60m6	140	18h9	64	505	360	865	18	400	350j6	450	5	18	8
2SKg225M10-12	60m6	140	18h9	64	505	360	890	18	400	350j6	450	5	18	8
2SKg250M10-12	65m6	140	18h9	69	540	405	965	19	500	450j6	550	5	18	8
2SKg280S10-12	75m6	140	20h9	79,5	620	440	1040	20	500	450j6	550	5	18	8
2SKg280M10-12	75m6	140	20h9	79,5	620	440	1040	20	500	450j6	550	5	18	8
2SKg315S10-12	80m6	170	22h9	85	620	440	1210	22	600	550j6	660	6	22	8
2SKg315M10-12	80m6	170	22h9	85	620	440	1210	22	600	550j6	660	6	22	8



Motor type	Poles	D	E	F	GA	HB	L	LA	M	N	P	S	T
3SIEK355...s*	4÷8	100m6	210	28h9	106	638	1955	24	740	680j6	800	22	6
3SIEK/SVh400...s*	4÷10	110m6	210	28h9	116	691	2090	30	940	880j6	1000	23	6
3SIEK/SVh450...s*	4÷12	110m6	210	28h9	116	849	2350	30	1080	1000j6	1150	28	6
3SIEK/SVh500...s*	4÷12	120m6	210	32h9	127	909	2504	30	1080	1000j6	1150	28	6

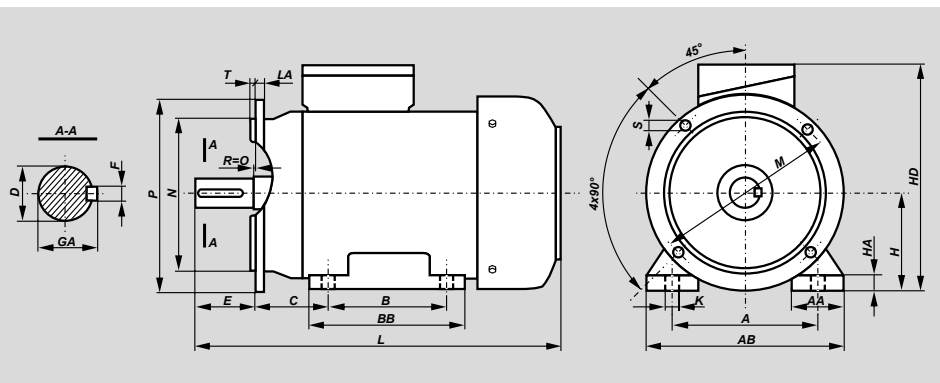
* – the SVh motors may operate only in vertical position IM V1.

Dimensions of Foot / Flange Mounted Motors – IM B35



Motor type	A	B	C	D	E	F	GA	H	K	M	N	P	S	LA	T	AA	AB	BB	HA	HD	L
SLh56-A	90	71	36	9j6	20	3h9	10,2	56	8	100	80j6	120	7	8	3	30	110	92	7	154	183
2SIEL56-2B	90	71	36	9j6	20	3h9	10,2	56	5,8	100	80j6	120	7	8	3	30	110	92	7	154	193
2SIEL63-A	100	80	40	11j6	23	4h9	12,5	63	7	115	95j6	140	10	9	3	36	124	106	8,5	165	200
2SIEL63-2,4B	100	80	40	11j6	23	4h9	12,5	63	7	115	95j6	140	10	9	3	36	124	106	8,5	165	210
2SIEL63-6B	100	80	40	11j6	23	4h9	12,5	63	7	115	95j6	140	10	9	3	36	124	106	8,5	165	245
2SIEL71-2,4A	112	90	45	14j6	30	5h9	16	71	7	130	110j6	160	10	9	3,5	45	142	116	8	182	245
2SIEL71-2B	112	90	45	14j6	30	5h9	16	71	7	130	110j6	160	10	9	3,5	45	142	116	8	182	245
2SIEL71-4,6B	112	90	45	14j6	30	5h9	16	71	7	130	110j6	160	10	9	3,5	45	142	116	8	182	263
2SIEL71-6A	112	90	45	14j6	30	5h9	16	71	7	130	110j6	160	10	9	3,5	45	142	116	8	182	223
2SIEL71-8B	112	90	45	14j6	30	5h9	16	71	7	130	110j6	160	10	9	3,5	45	142	116	8	182	284
2SIEL80-4A	125	100	50	19j6	40	6h9	21,5	80	10	165	130j6	200	12	10	3,5	55	160	130	9	200	266
2SIEL80-6A	125	100	50	19j6	40	6h9	21,5	80	10	165	130j6	200	12	10	3,5	55	160	130	9	200	278
2SIEL80-6B	125	100	50	19j6	40	6h9	21,5	80	10	165	130j6	200	12	10	3,5	55	160	130	9	200	306
2SIEL80-8A	125	100	50	19j6	40	6h9	21,5	80	10	165	130j6	200	12	10	3,5	55	160	130	9	200	306
2SIEL80-8B	125	100	50	19j6	40	6h9	21,5	80	10	165	130j6	200	12	10	3,5	55	160	130	9	200	318
3SIEL80-A	125	100	50	19j6	40	6h9	21,5	80	10	165	130j6	200	12	10	3,5	55	160	130	9	200	278
3SIEL80-B	125	100	50	19j6	40	6h9	21,5	80	10	165	130j6	200	12	10	3,5	55	160	130	9	200	306
2,3SIEL90S-2, 4, 6, 8	140	100	56	24j6	50	8h9	27	90	10	165	130j6	200	12	8	3,5	47	182	153	10	238	331
2,3SIEL90L-2, 8	140	125	56	24j6	50	8h9	27	90	10	165	130j6	200	12	8	3,5	47	182	153	10	238	331
3SIEL90L-4, 6	140	125	56	24j6	50	8h9	27	90	10	165	130j6	200	12	8	3,5	47	182	153	10	238	356
3SIEL100L-2, 6, 8A	160	140	63	28j6	60	8h9	31	100	12	215	180j6	250	15	11	4	52	202	170	12	257	377
3SIEL100L-4A, 4B, 8B	160	140	63	28j6	60	8h9	31	100	12	215	180j6	250	15	11	4	52	202	170	12	257	417
3SIEL112M-2, 6, 8	190	140	70	28j6	60	8h9	31	112	12	215	180j6	250	15	12	4	52	222	170	14	280	398
3SIEL112M-4	190	140	70	28j6	60	8h9	31	112	12	215	180j6	250	15	12	4	52	222	170	14	280	425
3SIEL132S	216	140	89	38k6	80	10h9	41	132	12	265	230j6	300	15	12	4	61	266	220	18	329	512
3SIEL132M	216	178	89	38k6	80	10h9	41	132	12	265	230j6	300	15	12	4	61	266	220	18	329	512
3SIEL160M	254	210	108	42k6	110	12h9	45	160	15	300	250j6	350	19	13	5	81	320	300	25	383	643
3SIEL160L	254	254	108	42k6	110	12h9	45	160	15	300	250j6	350	19	13	5	81	320	300	25	383	643
3SIEL180M	279	241	121	48k6	110	14h9	51,5	180	15	300	250j6	350	19	13	5	92	353	320	27	414	723
3SIEL180L	279	279	121	48k6	110	14h9	51,5	180	15	300	250j6	350	19	13	5	92	353	320	27	414	723
3SIEL200L8	318	305	133	55m6	110	16h9	59	200	19	350	300j6	400	19	16,5	5	90	400	365	35	434	723

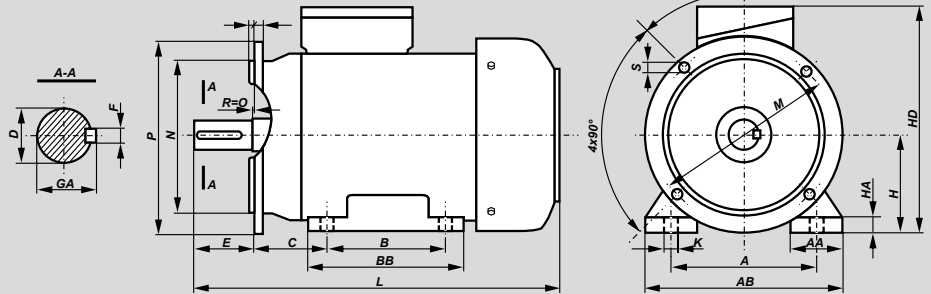
Dimensions of Foot / Flange Mounted Motors – IM B35



Motor type	A	B	B1	C	D	E	F	GA	H	HA	K	AA	AB	BA1	BA2	BB	HD	LA	P	M	N	T	L	S	
3SIEL200L2-6	318	305	-	133	55m6	110	16h9	59	200	32	19	80	400	113	113	380	520	16,5	400	350	300j6	5	850	19	4
3SIEL225S	356	286	311	149	60m6	140	18h9	64	225	34	19	85	440	115	115	380	570	18	450	400	350j6	5	930	19	8
3SIEL225M2	356	286	311	149	55m6	110	16h9	59	225	34	19	85	440	115	115	380	570	18	450	400	350j6	5	900	19	8
3SIEL225M4-8	356	286	311	149	60m6	140	18h9	64	225	34	19	85	440	115	115	380	570	18	450	400	350j6	5	930	19	8
3SIEL250M2	406	349	-	168	60m6	140	18h9	64	250	37	24	90	480	135	135	445	635	23	550	500	450j6	5	1010	19	8
3SIEL250M4-8	406	349	-	168	65m6	140	18h9	69	250	37	24	90	480	135	135	445	635	23	550	500	450j6	5	1040	19	8
3SIEL280S2	457	368	419	190	65m6	140	18h9	69	280	40	24	105	550	130	165	520	720	23	550	500	450j6	5	1135	19	8
3SIEL280S4-8	457	368	419	190	75m6	140	20h9	79,5	280	40	24	105	550	130	165	520	720	23	550	500	450j6	5	1135	19	8
3SIEL280M2	457	368	419	190	65m6	140	18h9	69	280	40	24	105	550	130	165	520	720	23	550	500	450j6	5	1135	19	8
3SIEL280M4-8	457	368	419	190	75m6	140	20h9	79,5	280	40	24	105	550	130	165	520	720	23	550	500	450j6	5	1135	19	8
3SIEL315S2	508	406	457	216	65m6	140	18h9	69	315	48	28	120	610	160	160	565	805	23	660	600	550j6	6	1235	24	8
3SIEL315S4-8	508	406	457	216	80m6	170	22h9	85	315	48	28	120	610	160	160	565	805	23	660	600	550j6	6	1265	24	8
3SIEL315M2A;B	508	406	457	216	65m6	140	18h9	69	315	48	28	120	610	160	160	565	805	23	660	600	550j6	6	1235	24	8
3SIEL315M4A;B;6A;8A;(B)	508	406	457	216	80m6	170	22h9	85	315	48	28	120	610	160	160	565	805	23	660	600	550j6	6	1265	24	8
3SIEL315M6B	508	406	457	216	80m6	170	22h9	85	315	48	28	135	610	135	205	600	805	23	660	600	550j6	6	1355	24	8
3SIEL315M2C	508	406	457	216	70m6	140	20h9	74,5	315	48	28	135	610	135	205	600	805	23	660	600	550j6	6	1290	24	8
3SIEL315M4C	508	406	457	216	80m6	170	22h9	85	315	48	28	135	610	135	205	600	805	23	660	600	550j6	6	1320	24	8
3SIEL315M6C	508	406	457	216	80m6	170	22h9	85	315	48	28	135	610	135	205	600	805	23	660	600	550j6	6	1320	24	8
3SIEL315M6D	508	406	457	216	90m6	170	25h9	95	315	48	28	135	610	135	205	600	805	23	660	600	550j6	6	1320	24	8
3SIEL315M8C;8D	508	406	457	216	90m6	170	25h9	95	315	48	28	135	610	135	205	600	805	23	660	600	550j6	6	1385	24	8
3SIEL355ML(2)	610	560	630	254	80m6	170	22h9	85	355	50	28	150	720	250	300	890	935	24	800	740	680j6	6	1580	22	8
3SIEL355ML(4-8)	610	560	630	254	100m6	210	28h9	106	355	50	28	150	720	250	300	890	935	24	800	740	680j6	6	1620	22	8
3SIEL355H(2)	610	900	-	254	70m6	140	20h9	74,5	355	45	28	160	730	265	265	1045	995	24	800	740	680j6	6	1854	22	8
3SIEL355H(4-8)	610	900	-	254	100m6	210	28h9	106	355	45	28	160	730	265	265	1045	995	24	800	740	680j6	6	1924	22	8

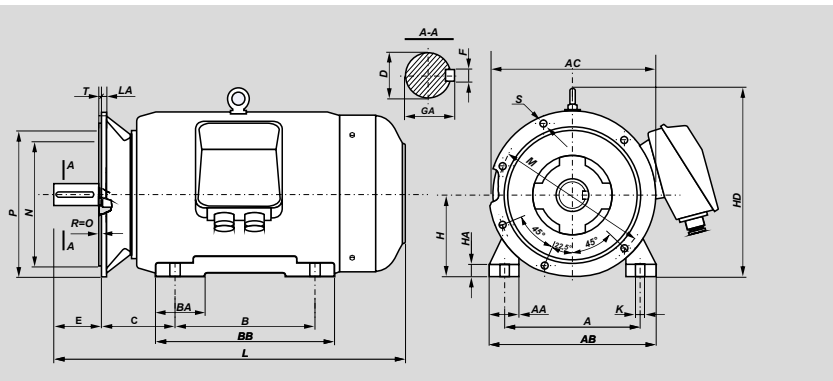
Dimensions of Foot / Flange Mounted Motors – IM B35

Motors series Sh and Sg • 2p=10, 12

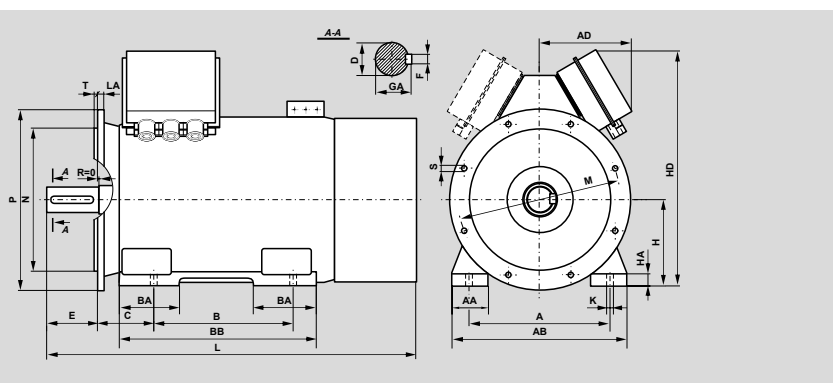


Motor type	A	B	C	D	E	F	GA	H	HA	K	AA	AB	BB	HD	L	LA	M	N	P	T	S
SLh90S-10	140	100	56	24j6	50	8h9	27	90	10	10	50	170	153	220	305	8	165	130j6	200	3,5	12
SLh90L-10	140	125	56	24j6	50	8h9	27	90	10	10	45	200	153	220	330	8	165	130j6	200	3,5	12
SLg100L-10A	160	140	63	28j6	60	8h9	31	100	14	12	54	230	172	240	376	11	215	180j6	250	4	15
SLg100L-10B	160	140	63	28j6	60	8h9	31	100	14	12	54	230	172	240	376	11	215	180j6	250	4	15
SLg112M-10	190	140	70	28j6	60	8h9	31	112	14	12	56	278	174	276	384	12	215	180j6	250	4	15
SLg112M-10A	190	140	70	28j6	60	8h9	31	112	14	12	56	278	174	276	384	12	215	180j6	250	4	15
SLg132S-10	216	140	89	38k6	80	10h9	41	132	16	12	56	278	182	310	463	12	265	230j6	300	4	15
SLg132S-10A	216	140	89	38k6	80	10h9	41	132	16	12	56	278	182	310	463	12	265	230j6	300	4	15
SLg132S-10B	216	140	89	38k6	80	10h9	41	132	16	12	56	278	220	310	463	12	265	230j6	300	4	15
SLg160L-10	254	254	108	42k6	110	12h9	45	160	20	15	60	305	300	370	656	13	300	250j6	350	5	19
SLg180L-10	279	279	121	48k6	110	14h9	51,5	180	26	19	70	350	320	408	705	13	300	250j6	350	5	19
SLg100L-12	160	140	63	28k6	60	8h9	31	100	14	12	54	230	172	240	376	11	215	180j6	250	4	15
SLg112M-12	190	140	70	28k6	60	8h9	31	112	14	12	56	278	174	276	384	12	215	180j6	250	4	15
SLg132S-12	216	140	89	38k6	80	10h9	41	132	16	12	56	278	182	310	463	12	265	230j6	300	4	15
SLg132M-12	216	178	89	38k6	80	10h9	41	132	16	12	56	278	220	310	501	12	265	230j6	300	4	15
SLg132M-12B	216	178	89	38k6	80	10h9	41	132	16	12	56	278	220	310	501	12	265	230j6	300	4	15
SLg160M-12	254	210	108	42k6	110	12h9	45	160	20	15	60	305	256	370	612	13	300	250j6	350	5	19
SLg160L-12	254	254	108	42k6	110	12h9	45	160	20	15	60	305	300	370	656	13	300	250j6	350	5	19
SLg180L-12	279	279	121	48k6	110	14h9	51,5	180	26	19	70	350	320	408	705	13	300	250j6	350	5	19

Dimensions of Foot / Flange Mounted Motors – IM B35

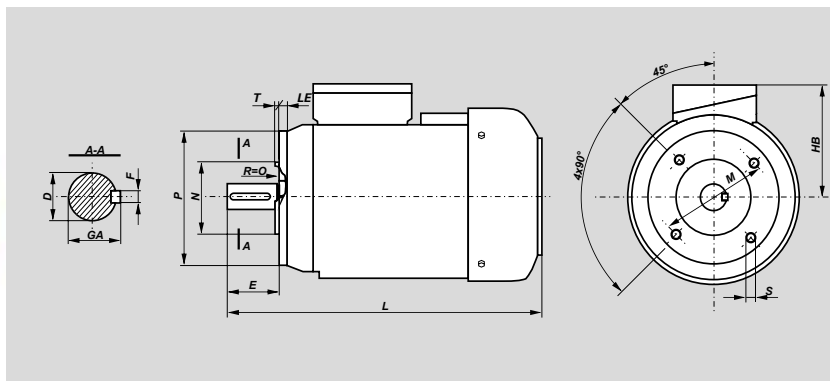


Motor type	A	B	C	D	E	F	GA	H	HA	K	AA	AB	AC	BA	BB	HD	L	LA	M	N	P	T	S	
2SLg200L10-12	318	305	133	55m6	110	16h9	59	200	32	19	80	400	450	100	380	485	825	16,5	350	300j6	400	5	18	4
2SLg225S10-12	356	286	149	60m6	140	18h9	64	225	34	19	85	445	505	110	355	535	865	18	400	350j6	450	5	18	8
2SLg225M10-12	356	311	149	60m6	140	18h9	64	225	34	19	85	445	505	110	380	535	890	18	400	350j6	450	5	18	8
2SLg250M10-12	406	349	168	65m6	140	18h9	69	250	36	24	90	495	540	120	420	590	965	19	500	450j6	550	5	18	8
2SLg280S10-12	457	368	190	75m6	140	20h9	79,5	280	40	24	100	560	620	165	520	660	1040	20	500	450j6	550	5	18	8
2SLg280M10-12	457	419	190	75m6	140	20h9	79,5	280	40	24	100	560	620	165	520	660	1040	20	500	450j6	550	5	18	8
2SLg315S10-12	508	406	216	80m6	170	22h9	85	315	46	28	105	610	620	190	560	695	1210	22	600	550j6	660	6	22	8
2SLg315M10-12	508	457	216	80m6	170	22h9	85	315	46	28	105	610	620	190	560	695	1210	22	600	550j6	660	6	22	8



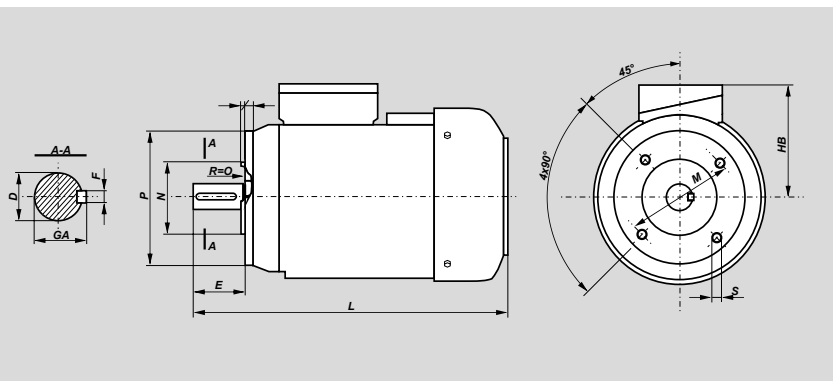
Motor type	Poles	A	B	C	D	E	F	GA	H	HA	K	AA	AB	AD	BA	BB	HD	L	LA	M	N	P	S	T
3SIEL355...s	2	610	900	254	70m6	140	20h9	74.5	355	45	28	160	730	344	265	1045	995	1854	24	740	680j6	800	22	6
3SIEL355...s	4÷8	610	900	254	100m6	210	28h9	106	355	45	28	160	730	344	265	1045	995	1924	24	740	680j6	800	22	6
3SIEL400...s	2	686	1000	280	80m6	170	22h9	85	400	50	35	175	840	520	265	1160	1255	2031	30	940	880j6	1000	25	6
3SIEL/SLh400...s	4÷10	686	1000	280	110m6	210	28h9	116	400	50	35	175	840	520	265	1160	1255	2016	30	940	880j6	1000	25	6
3SIEL450...s	2	750	1120	315	80m6	170	22h9	85	450	60	35	205	940	560	340	1320	1356	2162	30	1080	1000j6	1150	28	6
3SIEL/SLh450...s	4÷12	750	1120	315	110m6	210	28h9	116	450	60	35	205	940	560	340	1320	1356	2162	30	1080	1000j6	1150	28	6
3SIEL/SLh500...s	4÷12	850	1250	355	120m6	210	32h9	127	500	70	42	223	1050	560	300	1450	1470	2505	30	1080	1000j6	1150	28	6

Dimensions of Flange Mounted Motors – IM B14



Motor type	Flange	D	E	F	GA	M	N	P	S	T	LE	HB	L
SKh56 - .A1	B14/C1	9j6	20	3h9	10,2	85	70j6	105	M6	2,5	15	98	183
SKh56 - .A2	B14/C2	9j6	20	3h9	10,2	65	50j6	80	M5	2,5	12,5	98	183
2SIEK56-2B1	B14/C1	9j6	20	3h9	10,2	85	70j6	105	M6	2,5	15	98	193
2SIEK56-2B2	B14/C2	9j6	20	3h9	10,2	65	50j6	80	M5	2,5	12,5	98	193
2SIEK63-.A1	B14/C1	11j6	23	4h9	12,5	100	80j6	120	M6	3	14	102	200
2SIEK63-.A2	B14/C2	11j6	23	4h9	12,5	75	60j6	90	M5	2,5	9,5	102	200
2SIEK63-2,4B1	B14/C1	11j6	23	4h9	12,5	100	80j6	120	M6	3	14	102	210
2SIEK63-2,4B2	B14/C2	11j6	23	4h9	12,5	75	60j6	90	M5	2,5	9,5	102	210
2SIEK63-6B1	B14/C1	11j6	23	4h9	12,5	100	80j6	120	M6	3	14	102	245
2SIEK63-6B2	B14/C2	11j6	23	4h9	12,5	75	60j6	90	M5	2,5	9,5	102	245
2SIEK71-2,4A1	B14/C1	14j6	30	5h9	16	115	95j6	140	M8	3	14	111	245
2SIEK71-2,4A2	B14/C2	14j6	30	5h9	16	85	70j6	105	M6	2,5	12	111	245
2SIEK71-2B1	B14/C1	14j6	30	5h9	16	115	95j6	140	M8	3	14	111	245
2SIEK71-2B2	B14/C2	14j6	30	5h9	16	85	70j6	105	M6	2,5	12	111	245
2SIEK71-4,6B1	B14/C1	14j6	30	5h9	16	115	95j6	140	M8	3	14	111	263
2SIEK71-4,6B2	B14/C2	14j6	30	5h9	16	85	70j6	105	M6	2,5	12	111	263
2SIEK71-6A1	B14/C1	14j6	30	5h9	16	115	95j6	140	M8	3	14	111	223
2SIEK71-6A2	B14/C2	14j6	30	5h9	16	85	70j6	105	M6	2,5	12	111	223
2SIEK71-8B1	B14/C1	14j6	30	5h9	16	115	95j6	140	M8	3	14	111	284
2SIEK71-8B2	B14/C2	14j6	30	5h9	16	85	70j6	105	M6	2,5	12	111	284
2SIEK80-4A1	B14/C1	19j6	40	6h9	21,5	130	110j6	160	M8	3,5	14	120	266
2SIEK80-4A2	B14/C2	19j6	40	6h9	21,5	100	80j6	120	M6	3	12	120	266
2SIEK80-6A1	B14/C1	19j6	40	6h9	21,5	130	110j6	160	M8	3,5	14	120	278
2SIEK80-6A2	B14/C2	19j6	40	6h9	21,5	100	80j6	120	M6	3	12	120	278
2SIEK80-6B1	B14/C1	19j6	40	6h9	21,5	130	110j6	160	M8	3,5	14	120	306
2SIEK80-6B2	B14/C2	19j6	40	6h9	21,5	100	80j6	120	M6	3	12	120	306
2SIEK80-8A1	B14/C1	19j6	40	6h9	21,5	130	110j6	160	M8	3,5	14	120	306
2SIEK80-8A2	B14/C2	19j6	40	6h9	21,5	100	80j6	120	M6	3	12	120	306
2SIEK80-8B1	B14/C1	19j6	40	6h9	21,5	130	110j6	160	M8	3,5	14	120	316
2SIEK80-8B2	B14/C2	19j6	40	6h9	21,5	100	80j6	120	M6	3	12	120	316
3SIEK80- .A1	B14/C1	19j6	40	6h9	21,5	130	110j6	160	M8	3,5	14	119	278
3SIEK80- .A2	B14/C2	19j6	40	6h9	21,5	100	80j6	120	M6	3	12	119	306
3SIEK80- .B1	B14/C1	19j6	40	6h9	21,5	130	110j6	160	M8	3,5	14	119	278
3SIEK80- .B2	B14/C2	19j6	40	6h9	21,5	100	80j6	120	M6	3	12	119	306
2,3SIEK90S 2, 4, 6, L2, 8	B14/C1	24j6	50	8h9	27	130	110j6	160	M8	3,5	10	148	331
2,3SIEK90S 2, 4, 6, L2	B14/C2	24j6	50	8h9	27	115	95j6	140	M8	3	10	148	331

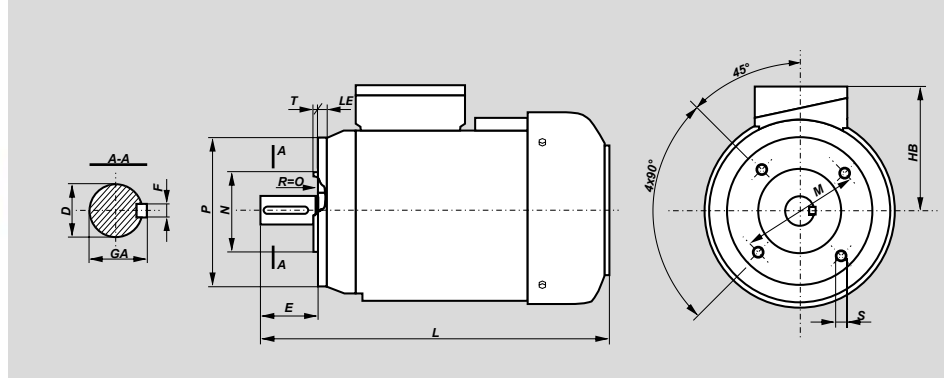
Dimensions of Flange Mounted Motors – IM B14



Motor type	Flange	D	E	F	GA	M	N	P	S	T	LE	HB	L
3SIEK90L 4, 6	B14/C1	24j6	50	8h9	27	130	110j6	160	M8	3,5	10	148	356
3SIEK90L 4, 6	B14/C2	24j6	50	8h9	27	115	95j6	140	M8	3	10	148	356
3SIEK100L 2, 6, 8A	B14/C1	28j6	60	8h9	31	165	130j6	200	M10	3,5	12	157	377
3SIEK100L 2, 6	B14/C2	28j6	60	8h9	31	130	110j6	160	M8	3,5	12	157	377
3SIEK100L 4A, 4B, 8B	B14/C1	28j6	60	8h9	31	165	130j6	200	M10	3,5	12	157	417
3SIEK100L 4A, 4B	B14/C2	28j6	60	8h9	31	130	110j6	160	M8	3,5	12	157	417
3SIEK112M 2, 6, 8	B14/C1	28j6	60	8h9	31	165	130j6	200	M10	3,5	12	168	398
3SIEK112M 2, 6	B14/C2	28j6	60	8h9	31	130	110j6	160	M8	3,5	12	168	398
3SIEK112M 4	B14/C1	28j6	60	8h9	31	165	130j6	200	M10	3,5	12	168	425
3SIEK112M 4	B14/C2	28j6	60	8h9	31	130	110j6	160	M8	3,5	12	168	425
3SIEK132S, M	B14/C1	38k6	80	10h9	41	215	180j6	250	M12	4	12	197	512
3SIEK132S, M	B14/C2	38k6	80	10h9	41	165	130j6	200	M10	3,5	12	197	512
3SIEK160M, L	B14/C1	42k6	110	12h9	45	265	230j6	300	M12	4	13	223	643
3SIEK160M, L	B14/C2	42k6	110	12h9	45	215	180j6	250	M12	4	13	223	643

Dimensions of Flange Mounted Motors – IM B14

Motors series Sh and Sg • 2p=10, 12



Motor type	Flange	D	E	F	GA	M	N	P	S	T	LE	HB	L
SKh90S-10	B14/C1	24j6	50	8h9	27	130	110j6	160	M8	3,5	10	-	305
SKh90S-10	B14/C2	24j6	50	8h9	27	100	80j6	120	M8	3	10	-	305
SKh90L-10	B14/C1	24j6	50	8h9	27	130	110j6	160	M8	3,5	10	-	330
SKh90L-10	B14/C2	24j6	50	8h9	27	100	80j6	120	M8	3	10	-	330
SKg100L-10A	B14/C1	28j6	60	8h9	31	165	130j6	200	M10	3,5	12	-	376
SKg100L-10A	B14/C2	28j6	60	8h9	31	130	110j6	160	M8	3,5	12	-	376
SKg100L-10B	B14/C1	28j6	60	8h9	31	165	130j6	200	M10	3,5	12	-	376
SKg100L-10B	B14/C2	28j6	60	8h9	31	130	110j6	160	M8	3,5	12	-	376
SKg112M-10	B14/C1	28j6	60	8h9	31	165	130j6	200	M10	3,5	12	-	384
SKg112M-10	B14/C2	28j6	60	8h9	31	130	110j6	160	M8	3,5	12	-	384
SKg112M-10A	B14/C1	28j6	60	8h9	31	165	130j6	200	M10	3,5	12	-	384
SKg112M-10A	B14/C2	28j6	60	8h9	31	130	110j6	160	M8	3,5	12	-	384
SKg132S-10	B14/C1	38k6	80	10h9	41	215	180j6	250	M12	4	12	-	463
SKg132S-10	B14/C2	38k6	80	10h9	41	165	130j6	200	M10	3,5	12	-	463
SKg132S-10A	B14/C1	38k6	80	10h9	41	215	180j6	250	M12	4	12	-	463
SKg132S-10A	B14/C2	38k6	80	10h9	41	165	130j6	200	M10	3,5	12	-	463
SKg132S-10B	B14/C1	38k6	80	10h9	41	215	180j6	250	M12	4	12	-	463
SKg132S-10B	B14/C2	38k6	80	10h9	41	165	130j6	200	M10	3,5	12	-	463
SKg160L-10	B14/C1	42k6	110	12h9	45	265	230j6	300	M12	4	13	-	656
SKg160L-10	B14/C2	42k6	110	12h9	45	215	180j6	250	M12	4	20	-	656
SKg100L-12	B14/C1	28j6	60	8h9	31	165	130j6	200	M10	3,5	12	-	376
SKg100L-12	B14/C2	28j6	60	8h9	31	130	110j6	160	M8	3,5	12	-	376
SKg112M-12	B14/C1	28j6	60	8h9	31	165	130j6	200	M10	3,5	12	-	384
SKg112M-12	B14/C2	28j6	60	8h9	31	130	110j6	160	M8	3,5	12	-	384
SKg132S-12	B14/C1	38k6	80	10h9	41	215	180j6	250	M12	4	12	-	463
SKg132S-12	B14/C2	38k6	80	10h9	41	165	130j6	200	M10	3,5	12	-	463
SKg132M-12	B14/C1	38k6	80	10h9	41	215	180j6	250	M12	4	12	-	501
SKg132M-12	B14/C2	38k6	80	10h9	41	165	130j6	200	M10	3,5	12	-	501
SKg132M-12B	B14/C1	38k6	80	10h9	41	215	180j6	250	M12	4	12	-	463
SKg132M-12B	B14/C2	38k6	80	10h9	41	165	130j6	200	M10	3,5	12	-	463
SKg160M-12	B14/C1	42k6	110	12h9	45	265	230j6	300	M12	4	13	-	612
SKg160M-12	B14/C2	42k6	110	12h9	45	215	180j6	250	M12	4	20	-	612
SKg160L-12	B14/C1	42k6	110	12h9	45	265	230j6	300	M12	4	13	-	656
SKg160L-12	B14/C2	42k6	110	12h9	45	215	180j6	250	M12	4	20	-	656