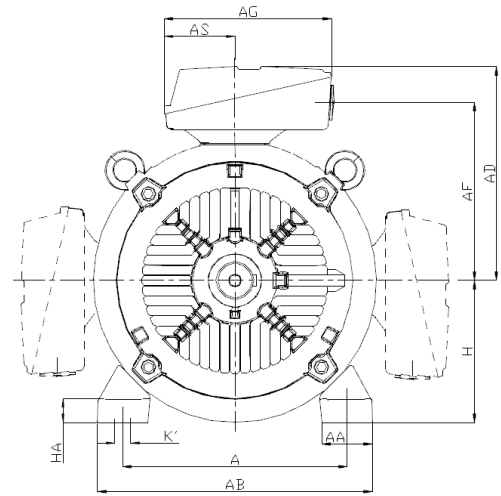
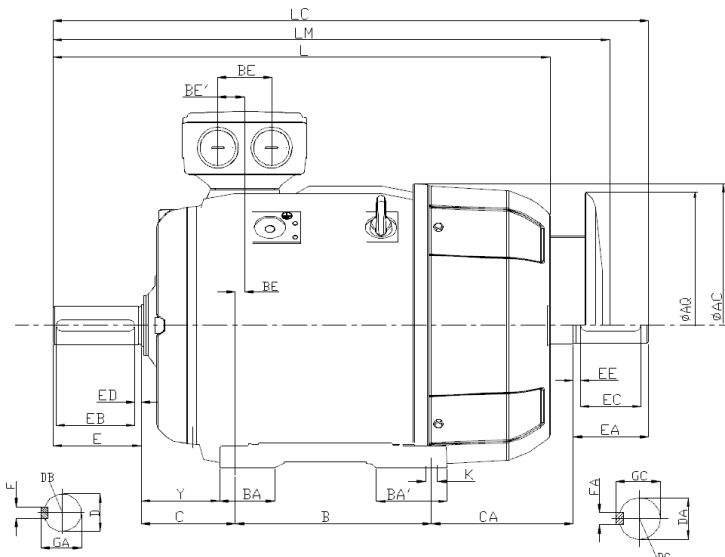
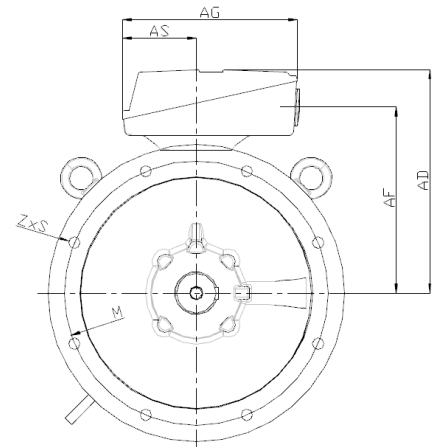
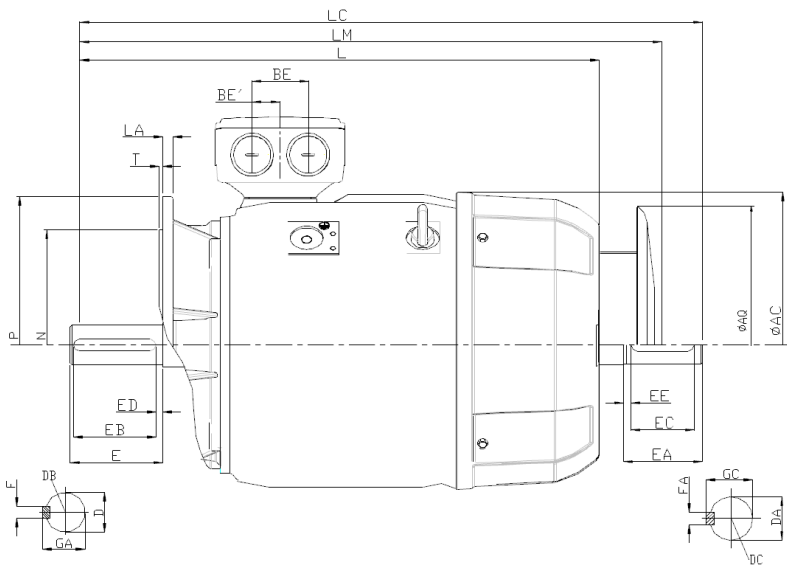


**DIM 1TZ9 - Maße Baugröße 280 dimensions frame size 280**

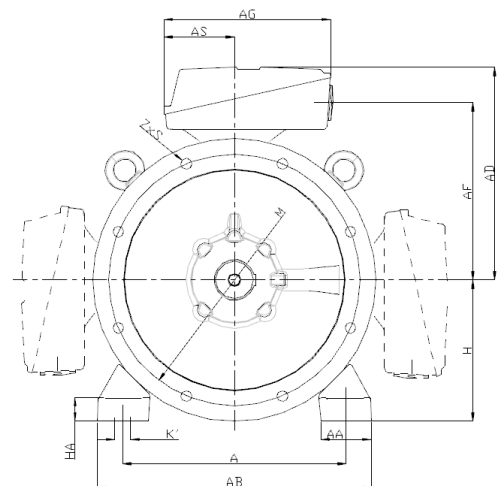
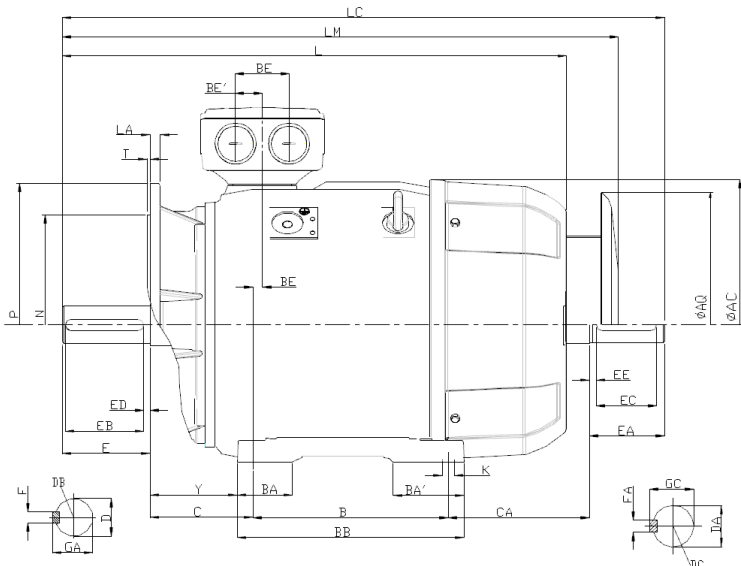
**280** Fußbaformen *feet type of construction*



Flanschbaformen *flange type of construction*



Fuß- Flanschbaformen *feet / flange type of construction*



# IEC Käfigläufermotoren *IEC squirrel-cage-motors*

Eigengekühlte Energiespartmotoren *self-ventilated energy saving motors*

Gehäuse frame	AC	AD	AD'	AF	AG	AH	AS	BE	BE'	H	HH	L1	D1	LL	DIM 280
280 S/M	551	433	433	345	319	672	145	110	55	280	210	-	-	233	

FüÙe feet	A	AA	AB	B	BA	BA'	BB	BC	C	HA	K	K'	Y
280 S	457	100	540	368	101	152	479	20	190	40	24	30	160
280 M	419												

Flansch flange	LA	M	N	P	S	T	Z	Schutzdach canopy (optional) AQ	
B5	18	500	450	550	18,5	5	8	525	
B14a	-	-	-	-	-	-	-		
B14b	-	-	-	-	-	-	-		

Welle shaft	Pole	D/DA	DB/DC	E/EA	EB/EC	ED/EE	F/FA	GA/GC
A-Seite DE	2	65	M20	140	125	10	18	69
	4,6,8	75	M20	140	125	10	20	79,5
B-Seite NDE (optional)	2	60	M20	140	125	10	18	64
	4,6,8	65	M20	140	125	10	18	69

LängenmaÙe length dimensions									
Pole	Leistung	Baugröße	Eff	Type					
<i>pole</i>	<i>power</i>	<i>frame size</i>	<i>eff</i>	<i>type</i>	L	LC	CA	LM	
2	75	280 S	IE2	1TZ9501-2DA0	960	1105	267	1070	
2	75	280 S	IE3	1TZ9503-2DA0	960	1105	267	1070	
2	75	280 S	IE4	1TZ9504-2DA0	1070	1215	377	1180	
2	90	280 M	IE2	1TZ9501-2DA2	960	1105	216	1070	
2	90	280 M	IE3	1TZ9503-2DA2	1070	1215	326	1180	
2	90	280 M	IE4	1TZ9504-2DA2	1070	1215	326	1180	
2	110	280 M	IE2	1TZ9501-2DA6	1070	1215	326	1180	
2	110	280 M	IE3	1TZ9503-2DA6	1070	1215	326	1180	
4	75	280 S	IE2	1TZ9501-2DB0	960	1105	267	1070	
4	75	280 S	IE3	1TZ9503-2DB0	960	1105	267	1070	
4	75	280 S	IE4	1TZ9504-2DB0	1070	1215	377	1180	
4	90	280 M	IE2	1TZ9501-2DB2	960	1105	216	1070	
4	90	280 M	IE3	1TZ9503-2DB2	1070	1215	326	1180	
4	90	280 M	IE4	1TZ9504-2DB2	1070	1215	326	1180	
4	110	280 M	IE2	1TZ9501-2DB6	1070	1215	326	1180	
4	110	280 M	IE3	1TZ9503-2DB6	1070	1215	326	1180	
6	45	280 S	IE2	1TZ9501-2DC0	960	1105	267	1070	
6	45	280 S	IE3	1TZ9503-2DC0	960	1105	267	1070	
6	55	280 M	IE2	1TZ9501-2DC2	960	1105	216	1070	
6	55	280 M	IE3	1TZ9503-2DC2	960	1105	216	1070	
6	75	280 M	IE2	1TZ9501-2DC6	960	1105	216	1070	
6	75	280 M	IE3	1TZ9503-2DC6	1070	1215	326	1180	
8	37	280 S	IE1	1TZ9502-2DD0	960	1105	267	1070	
8	37	280 S	IE2	1TZ9501-2DD0	960	1105	267	1070	
8	37	280 S	IE3	1TZ9503-2DD0	960	1105	267	1070	
8	45	280 M	IE1	1TZ9502-2DD2	960	1105	216	1070	
8	45	280 M	IE2	1TZ9501-2DD2	960	1105	216	1070	
8	45	280 M	IE3	1TZ9503-2DD2	960	1105	216	1070	
8	55	280 M	IE1	1TZ9502-2DD6	960	1105	216	1070	
8	55	280 M	IE2	1TZ9501-2DD6	960	1105	216	1070	